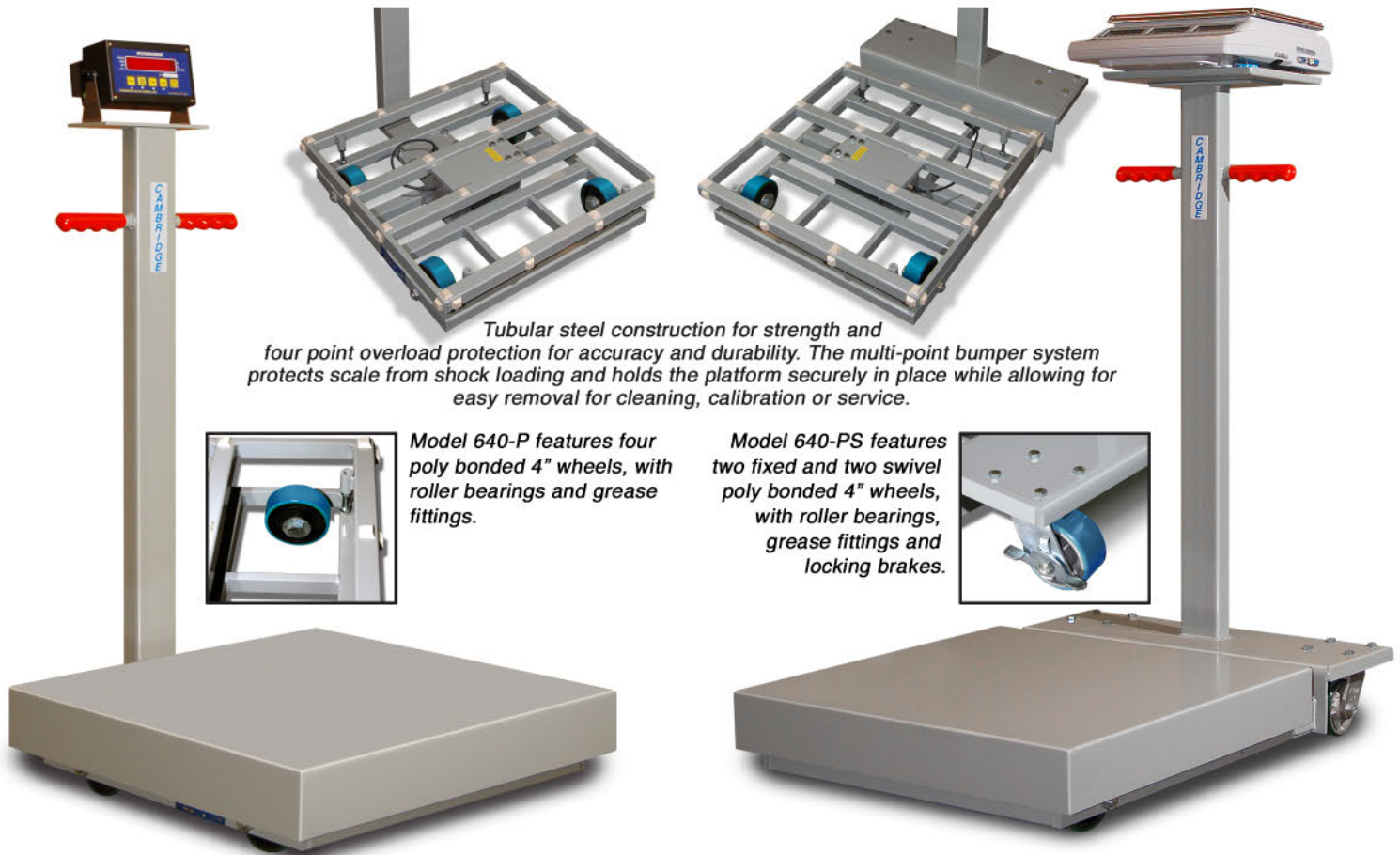


C A M B R I D G E

MODEL 640-P AND 640-PS PORTABLE PLATFORM SCALES



Tubular steel construction for strength and four point overload protection for accuracy and durability. The multi-point bumper system protects scale from shock loading and holds the platform securely in place while allowing for easy removal for cleaning, calibration or service.

Model 640-P features four poly bonded 4" wheels, with roller bearings and grease fittings.

Model 640-PS features two fixed and two swivel poly bonded 4" wheels, with roller bearings, grease fittings and locking brakes.

Model 640-P Features:

- 100 lb. to 1,000 lb. capacity.
- Low maintenance cost.
- Structural tubular carbon steel construction.
- Environmentally protected, NTEP Certified-5000 Division aluminum load cell.
- (4) Poly bonded 4" wheels, w/ roller bearings and grease fittings.
- Heavy gauge painted steel cover.
- 4 point overload protection.
- 1 part in 5,000 accuracy.
- Urethane enamel paint.
- 40" high indicator column with mounting plate.
- OSHA orange safety handle grips.
- Shock absorbing platform bumpers.

Model 640-PS Features:

- (2) Poly bonded 4" wheels, w/ roller bearings and grease fittings. (front)
- (2) Poly bonded 4" swivel wheels, w/ roller bearings, grease fittings, and locking brakes (rear).
- 100 lb. to 1,000 lb. capacity.
- Low maintenance cost.
- Structural tubular carbon steel construction.
- Environmentally protected, NTEP Certified-5,000 Division aluminum load cell.
- Heavy gauge painted steel cover.
- 4 point overload protection.
- 1 part in 5,000 accuracy.
- Urethane enamel paint.
- 40" high indicator column with mounting plate.
- OSHA orange safety handle grips.
- Shock absorbing platform bumpers.

Approvals:



COC # 12-115A1



MEASUREMENT CANADA
AM-5881-REV1



Made in USA

Members:

- THE NATIONAL CONFERENCE ON WEIGHTS AND MEASURES
- THE INTERNATIONAL SOCIETY OF WEIGHING AND MEASUREMENT

C A M B R I D G E

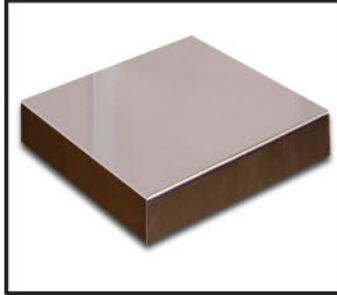
MODEL 640-P AND 640-PS PORTABLE PLATFORM SCALES

Model 640-P & 640-PS Options:

- Rear push bar
- Stainless steel cover for harsh environments and corrosive materials.
- Stainless steel or "FM" approved load cells.



Rear push bar.



Stainless steel cover for harsh environments and corrosive materials.



Stainless steel or "FM" approved load cells.

Model 640-P & 640-PS Specifications

PLATFORM SIZE	COLUMN HEIGHT	CAPACITY	APPROX. SHIPPING WEIGHT	
			640-P	640-PS
18" x 24" x 6"	40"	100 lb. x .02 lb.	145 lb.	165 lb.
		250 lb. x .05 lb.	145 lb.	165 lb.
		500 lb. x .1 lb. *	145 lb.	165 lb.
		1,000 lb. x .2 lb. *	145 lb.	165 lb.
24" x 24" x 6"	40"	100 lb. x .02 lb.	165 lb.	185 lb.
		250 lb. x .05 lb.	165 lb.	185 lb.
		500 lb. x .1 lb. *	165 lb.	185 lb.
		1,000 lb. x .2 lb. *	165 lb.	185 lb.

* NTEP & Measurement Canada Approved

Cambridge Scale Works Battery Operated Indicators

Match your new portable platform scale to one of our battery operated indicators for the ultimate portable weighing system. Consult your distributor for package prices.



CSW-10AT-B *



CSW-20AT-B *

Distributed By:

Cambridge Scale Works, Inc. will warrant this product for one full year against defects in material and/or workmanship.

Cambridge Scale Works, Inc. • P. O. Box 670 • Honey Brook, PA 19344
(800) 292-7640 • www.cambridgescale.com

© Cambridge Scale Works, Inc. 12/2016

