

CAMBRIDGE

MODEL CSFB SERIES FLEXURE BASES

Applications:

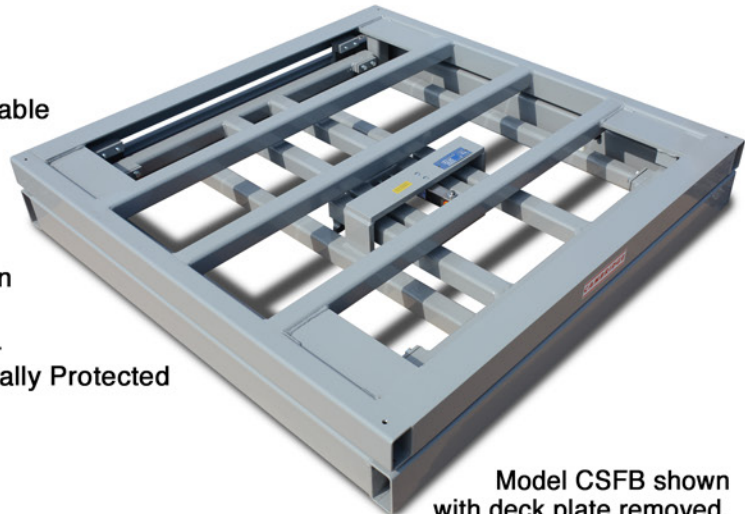
- General Purpose Weighing
- Shock Loading
- Junk Yards
- Recycling Centers
- Landscape Yard



Built Cambridge tough. Model CSFB Flexure base is designed to handle the kind of abuse that accompanies the most demanding kinds of applications. The CSFB is perfect in applications where shock loading is common.

Model CSFB Standard Features:

- Ratio Lever System Design
- Structural Tubular Steel Construction
- Grade 5 Hardware
- High Strength Self-Aligning Wire Rope Cable
- One Internal Load Cell
- "Live Mounted" Load Cell
- 20' Shielded Indicator Cable
- Smooth Deck Plate - Removable for easy access to live section
- Hardened Stainless Steel Flexures
- Shear Beam Load Cell - NTEP Certified - 5000 Division - Class III/IIIL Environmentally Protected
- 150% Overload Protection
- Durable Urethane Enamel Paint
- One Part in 5000 Accuracy
- Shock Load and Side Load Protection
- Compatible with Most Digital Indicators with Remote Base Capabilities



Model CSFB shown with deck plate removed.

Approvals:

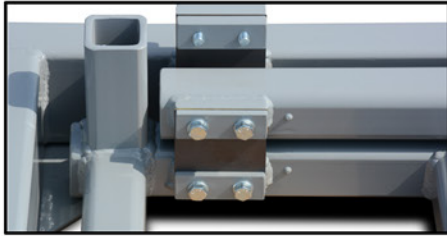


Members:

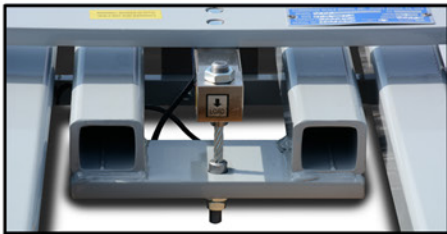
- THE NATIONAL CONFERENCE ON WEIGHTS AND MEASURES

C A M B R I D G E

MODEL CSFB SERIES FLEXURE BASES



Cambridge Model CSFB series scales feature hardened stainless steel flexures with grade "5" hardened hardware.



CSFB series scales feature "live mounted" shear beam load cell, NTEP Certified, 5000 Division, class III/IIIL, environmentally protected.

Options:

- Four Leveling Feet
- Diamond Plate Deck
- Stainless Steel Construction
- Lag Down Brackets
- Rigid Indicator Column
- Harsh Environment Package
Includes:
Sandblasting
Cold Zinc Epoxy Coating
Polyurethane Enamel Top Coat
Stainless Steel Hardware
Stainless Steel Flexures
Stainless Steel Load Cell
- Fork Lift Skid Package
Includes:
Fork Lift Channels
Pedestals
Captive Ball Leveling Feet

PLATFORM SIZE	CAPACITY	APPROX. SHIP WT.
30" x 30" x 8"	1,000 lbs.	250 lbs.
30" x 30" x 8"	2,500 lbs.	250 lbs.
36" x 36" x 8"	1,000 lbs.	360 lbs.
36" x 36" x 8"	2,500 lbs.	360 lbs.
36" x 36" x 8"	5,000 lbs.	360 lbs.
48" x 48" x 8"	1,000 lbs.	650 lbs.
48" x 48" x 8"	2,500 lbs.	650 lbs.
48" x 48" x 8"	5,000 lbs.	650 lbs.
48" x 48" x 11.5"	10,000 lbs.	850 lbs.
48" x 48" x 13.5"	20,000 lbs.	1,050 lbs.
48" x 60" x 8"	2,500 lbs.	750 lbs.
48" x 60" x 8"	5,000 lbs.	750 lbs.
48" x 60" x 11.5"	10,000 lbs.	950 lbs.
48" x 60" x 13.5"	20,000 lbs.	1,150 lbs.
48" x 72" x 8"	2,500 lbs.	850 lbs.
48" x 72" x 8"	5,000 lbs.	850 lbs.
48" x 72" x 11.5"	10,000 lbs.	1,050 lbs.
48" x 72" x 13.5"	20,000 lbs.	1,250 lbs.
60" x 60" x 8"	2,500 lbs.	900 lbs.
60" x 60" x 8"	5,000 lbs.	900 lbs.
60" x 60" x 11.5"	10,000 lbs.	1,100 lbs.
60" x 60" x 13.5"	20,000 lbs.	1,300 lbs.
60" x 72" x 11.5"	10,000 lbs.	1,200 lbs.
60" x 72" x 13.5"	20,000 lbs.	1,400 lbs.
60" x 84" x 11.5"	10,000 lbs.	1,350 lbs.
60" x 84" x 13.5"	20,000 lbs.	1,650 lbs.
72" x 72" x 11.5"	10,000 lbs.	1,450 lbs.
72" x 72" x 13.5"	20,000 lbs.	1,750 lbs.

Consult factory for custom sizes and capacities • Specifications subject to change without notice

Distributed By:

Cambridge Scale Works, Inc.
 will warrant this product for
 one full year against defects in
 material and/or workmanship.



Cambridge Scale Works, Inc. • P O Box 670 • Honey Brook, PA 19344
(800) 292-7640 • (610) 273-7040 • www.cambridgescale.com